



\*4K—BUTTER DISH  
6.50



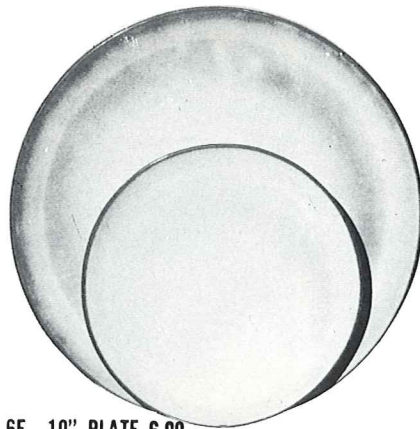
\*6U—18 OZ. BAKER FOR TWO  
A COVERED CANDY DISH 6.50



\*6VS—1½ QT. BAKER 9.25  
6VS/W BAKER & WARMER SET 16.50



\*6V—2½ QT. BAKER 13.25  
6V/W BAKER & WARMER SET 20.50



6F—10" PLATE 6.00  
6G—7" PLATE 3.50



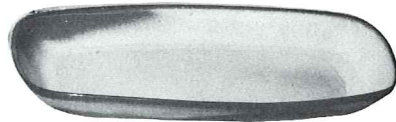
\*5LC—6 OZ. JUICE 3.25



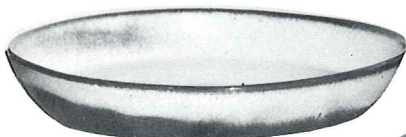
\*5L—12 OZ.  
TUMBLER  
3.75



\*6T—6 CUP TEAPOT 9.25



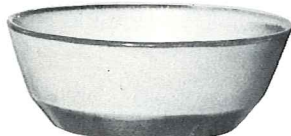
5QS—13" STEAK PLATE (SHALLOW PLATTER) 5.00  
\*6P—11" STEAK PLATE 4.50  
\*5PS—9" TRAY 3.75



\*91—10" BAKING DISH  
4.75



\*X0—3 OZ.  
SINGLE SERVING  
BOWL 1.50



\*6N—1 QT. BOWL  
4.75



\* \*6X—14 OZ. CHILI SOUP 3.25  
\* \*6XS—10 OZ. FRUIT 2.75



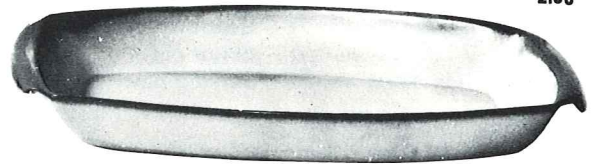
\*6S—2 SPOUT GRAVY  
6.50



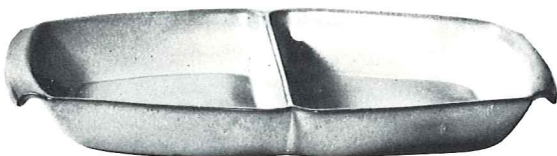
\*242  
2.50 CORN DISH



\*243—6½" CRESCENT SALAD  
2.50



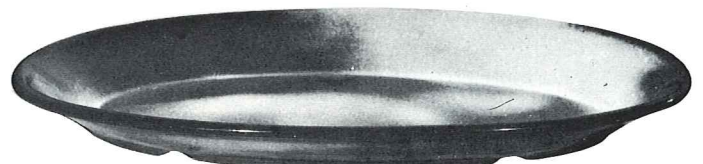
17.50 7.75  
5P—17" DEEP PLATTER \*5Q—13" DEEP PLATTER



\*5QD—13" DIVIDED BOWL  
7.75



\*BP—6 OZ. BEAN POT  
OR CUSTARD  
2.75



\*TP—17" OVAL PLATTER  
17.50



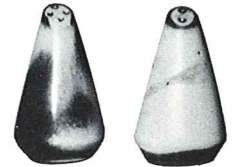
\*6B—SUGAR WITH LID  
5.00



\*6A—9 OZ. CREAMER  
3.25



\* \*6C—CUP 3.25  
6E—5" WELLED SAUCER 2.75



\*6H—SALT & PEPPER  
4.75



249 TACO HOLDER  
BOXED 2 PER BOX 10.00  
Not Available in Flame



\*81—1 QT. PITCHER 6.50



\*80—2 QT. PITCHER 9.25



\*6J—2 CUP TEAPOT  
6.50

THIS PAGE AVAILABLE IN PRAIRIE GREEN, ROBIN EGG BLUE, AUTUMN YELLOW AND WHITE SAND EXCEPT WHERE NOTED

\* AVAILABLE IN 8 STANDARD COLORS — ADD 50% FOR FLAME

SIZES ARE APPROXIMATE AND MAY VARY SLIGHTLY.

\* \* AVAILABLE IN BLACK & FLAME ALSO.